



GLENCAIRN
MUSEUM

2020-2021 ANNUAL REPORT



WELCOME

A MESSAGE FROM THE DIRECTOR

Though safety guidelines were still in place due to COVID-19, 2020-2021 brought with it the opportunity to offer in-person programming once again at Glencairn Museum. Staff members embraced any limitations with creativity and determination so on-site learning and connection could resume. The production of new online materials and experiences continued to ensure uninterrupted public access to what Glencairn has to offer. It is with gratitude for the staff's dedicated work that I review and report on the accomplishments and happenings at Glencairn Museum in 2020-2021.

MISSION STATEMENT

The mission of Glencairn Museum is to engage a diverse audience with the common human endeavor to find higher meaning and purpose in our lives. This is achieved by recognizing universal spiritual concepts expressed in religious beliefs and practices around the world—past and present—through the interpretation of art, artifacts, and other cultural expressions of faith. A special focus of the Museum is to preserve and interpret art and artifacts that illustrate New Church (Swedenborgian Christian) beliefs and practices.

IMPACT STATEMENT

Rooted in the notion that religion is not only believed but lived, Glencairn Museum seeks to stimulate reflection, build understanding, and foster empathy, contributing to the betterment of society by looking to the goodness in others and living a life of kindness.

EDUCATION

PROGRAMS AND RESOURCES

Amey Glenn, Glencairn’s Educational Programs Manager, and the education staff collaborated with the Museum’s digital creative design team, Christine McDonald and Edwin Herder, to create more than 20 Video Educational Programs and Digital Educational Resources to ensure that students from local and regional schools could continue to engage with the Glencairn Museum collection during the COVID-19 pandemic. A few of the programs included: an Ancient Cultures miniseries, featuring artifacts from the Ancient Near East, Classical Greece and Rome, and Ancient Egypt; Early Christian Art; Byzantine Mosaics; Islam; Medieval Manuscripts; Medieval Pilgrimage; and Renaissance Tapestries. Digital resources for Ancient Cultures, Life in the Middle Ages, and Medieval Stained Glass provided teachers and students with links to objects in the Glencairn collection as well as questions to guide engagement with each object, classroom activities, and questions for discovery and discussion.

<https://glencairnmuseum.org/educational-resources>

Glencairn Museum Kids provided projects, activities, and multisensory activities for younger children on the Museum’s website and through social media. <https://glencairnmuseum.org/gmk-homepage>



OPEN HOUSE

(December 1, 2020—January 1, 2021)

Glencairn’s annual **Christmas Homeschool Day** took place throughout the month of December as a virtual **Glencairn Christmas at Home** experience. Participants were invited to explore Glencairn’s first floor decorated for Christmas, featuring Nativities and Christmas-themed works of art through a “choose-your-own format.” The experience also offered a Nativity seek-and-find, a multi-sensory Christmas Nativity Explorer’s Notebook, and a Christmas hands-on craft activity.



ADULT WORKSHOPS

DESIGNING FOR EMPATHY DIALOGUE AND WORKSHOP (April 15)

Glencairn Museum hosted an international virtual panel discussion and workshop on the topic of fostering empathy through intentional museum program and exhibition design. Keynote speaker Dr. Elif Gökçığdem, an internationally recognized leader and author in the field of empathy design in museums, was joined by panelists Makeba Clay (Philips Collection, Washington, D.C.) and Dr. Zorana Ivcevic Pringle (senior research scientist, Yale University), Philip Himberg (executive director, MacDowell) led the more than 60 participants through a creative tensions workshop to close the program.



GLENCAIRN MUSEUM IS PRIVILEGED TO
INVITE YOU TO THE FOLLOWING SPECIAL EVENT

DESIGNING FOR EMPATHY DIALOGUE AND WORKSHOP

DESIGNING
FOR
EMPATHY
WORKSHOPS



A one-time virtual event hosted by Glencairn Museum
With Keynote speaker Dr. Elif M. Gökçığdem and other expert contributors

DATE: APRIL 15, 1:00-3:00PM EST
REGISTRATION FEE: \$25.00
REGISTRATION DEADLINE: APRIL 13

EDUCATION





PUBLIC PROGRAMMING



FESTIVAL AND OPEN HOUSE

VIRTUAL MEDIEVAL FESTIVAL (October 19—25)

Due to the COVID-19 pandemic, the Museum’s popular annual **Medieval Festival** was hosted as an online experience, featuring 16 videos of artists, artisans, and expert demonstrators. The video collection was published online and posted to social media over the course of a week (October 19—25), along with two livestream demonstrations with real-time virtual Q&A sessions. Participants traveled on a virtual “pilgrimage” to learn about religious sites in medieval Europe and enjoyed demonstrations of manuscript illumination, medieval musical instruments, medieval chants, glassblowing, and our Gutenberg-style printing press by participating artists and artisans. An expert falconer treated guests to a captivating program on falconry in the Middle Ages as his hawks flew above Glencairn’s grounds.

<https://glencairnmuseum.org/upcoming-events/2020/10/19/annual-event-virtual-medieval-festival>



To bring the fun and interactive elements of our Medieval Festival home to viewers, the educational department collaborated with each demonstrator to create **family-friendly activities** that could be done at home, including manuscript illumination, making a falcon mask, baking a stained-glass cookie, a dance tutorial, and training for knighthood.

MYTH AND MAGIC AT THE MUSEUM (October 26—November 1)

Glencairn’s family-friendly Myth and Magic at the Museum Halloween event also moved outdoors, including a mythology-themed digital scavenger hunt offered during the week leading up to Halloween. Families returned to Glencairn in costume on Halloween afternoon to enjoy a live barn owl demonstration in Glencairn’s Cloister and interact with costumed Glencairn staff along the scavenger hunt route.

<https://glencairnmuseum.org/upcoming-events/2020/10/26/annual-event-myth-amp-magic-at-the-museum>





TOURS

DISCOVER GLENCAIRN

In the fall, Glencairn Museum debuted **Discover Glencairn**, a self-guided, socially-distanced tour in place of our guided tours of our galleries. Using a web-based application, this tour engaged visitors with the architectural features of the exterior of Glencairn and the Cloister garden, the mosaic Bird Room, and the art and artifacts in Glencairn's Upper and Great Halls, while also providing socially distant access to the *Sacred Adornment: Jewelry as Belief in Ancient Egypt* exhibition.

CHILDREN'S PHOTO SCAVENGER HUNT

Also new in the fall was a **Children's Photo Scavenger Hunt**, a safe and popular outdoor way for families to engage with the beautiful details adorning Glencairn's exterior architecture, gardens, and grounds. Through either a web-based application or a printed map, the scavenger hunts invited children to locate and identify unique carvings and architectural features and encouraged them to take photos and post with the tag @glencairnmuseum and using #glencairnscavengerhunt.

FAMILY ADVENTURE TOUR

When the Museum re-opened for limited in-person programming in the spring, a new **Family Adventure Tour** invited children and their grownups to embark on a Medieval adventure of their choosing through the Glencairn collection. Six different adventure options included: discovering how herbs were used in the Middle Ages; training for a medieval battle; apprenticing to become a scribe, stonemason, or stained-glass artis; and exploring the religious beliefs and practices of Europe in the Middle Ages. Participants received booklets to guide them through their selected self-guided tour, and badges to celebrate their completion of each adventure

<https://glencairnmuseum.org/upcoming-events/2021/5/4/family-adventure-tour>



PUBLIC PROGRAMMING



TOURS

CHRISTMAS IN THE CASTLE TOUR

In place of the Museum's popular in-person **Christmas in the Castle Tour**, a new 10-minute Christmas tour video was filmed and produced, which was enjoyed by more than 2,000 people. This online video tour invited viewers to journey back through time to explore the holiday traditions of the Pitcairn family when Glencairn was their home (1940s to 1970s). Highlights included archival photographs and a narration of the Biblical Christmas story accompanied by images of the Christmas art in Glencairn's permanent collection.

DISCOVER GLENCAIRN AT CHRISTMAS

Visitors were able to enjoy **Discover Glencairn at Christmas** for a brief period (November 27 through December 11) before the Museum was forced to close to in-person visitors due to Pennsylvania statewide health safety guidelines as a result of a resurgence of the COVID-19 pandemic. This self-guided tour offered Glencairn's Great and Upper Halls decorated for Christmas, including more than two dozen Nativities, Mildred Pitcairn's red Christmas dress, the Pitcairn's antique Steiff ride-on donkey, traditional Christmas decorations, and an array of Christmas works of art, from medieval to contemporary.

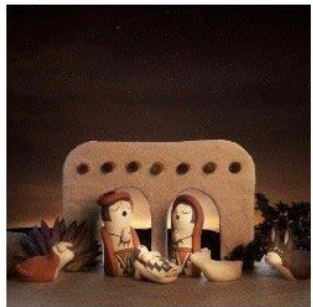




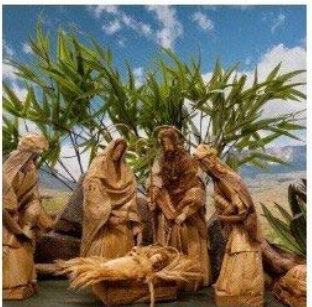
EXHIBITIONS

EXHIBITION | WORLD NATIVITIES (November 29—January 5)

Anticipating in-person restrictions, the Museum’s annual **World Nativities exhibition** was published online for all to enjoy. Each day, from December 1 through December 25, a new Nativity scene from Glencairn’s collection appeared through an online Advent calendar, which viewers could access through either Glencairn’s website or our social media (Facebook, Instagram, Twitter, Tumblr). While disappointed not to be able to host the exhibition in our Great and Upper Halls this year, we were thrilled that the World Nativities Advent Calendar received nearly 10,000 visits on the Museum’s website and was viewed through social media by up to 2,000 people each day leading up to Christmas.



December 4 - United States



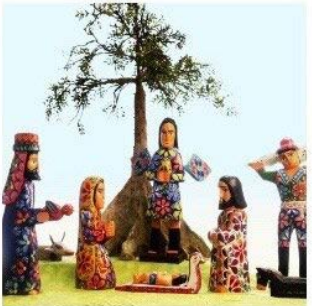
December 5 - Venezuela



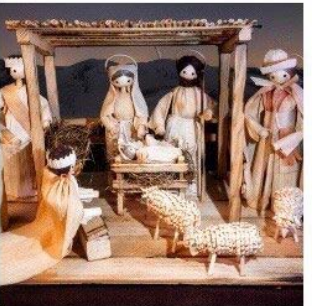
December 6 - Denmark



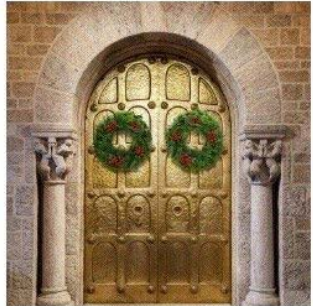
December 7 - United States



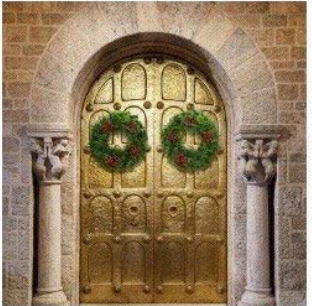
December 8 - Guatemala



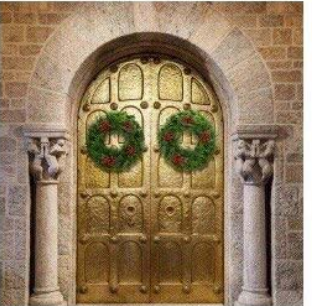
December 9 - Slovakia



December 10



December 11



December 12

EXHIBITION | SACRED ADORNMENT: JEWELRY AS BELIEF IN ANCIENT EGYPT (February 29, 2020—November 8, 2020) (January 19, 2021—October 31, 2021)

In February, **Sacred Adornment: Jewelry as Belief in Ancient Egypt** was reopened. This exhibition, guest curated by Dr. Jennifer Houser Wegner (associate curator in the Egyptian Section at the University of Pennsylvania Museum of Archaeology and Anthropology) explores how jewelry in the Glencairn Museum collection was used by the ancient Egyptians to adorn, protect, and express devotion to the divine. Examining and reflecting on the materials and symbols present in these ornaments can deepen and enrich an understanding of the complex ideas that guided the ancient artists, as well as the hopes and beliefs of those who wore this jewelry in ancient times. The Museum’s education department designed and published an **online interactive site** to accompany the exhibition, adapting the themes of the exhibition for young students and including a series of hands-on activities. This exhibition will remain open through October 31, 2021.

<https://glencairnmuseum.org/exhibitions-full/2021/2/2/sacred-adornment-jewelry-as-belief-in-ancient-egypt>



PUBLIC PROGRAMMING



LACHLAN PITCAIRN CONCERT SERIES

GLENCAIRN CHRISTMAS SING ONLINE CONCERT (December 16, 2020—January 31, 2021)

Thanks to the talents of Glencairn Museum’s digital creative design team, the Museum was able to offer the 84-year-old annual tradition of the **Glencairn Sing** as a special online concert, watched on nearly 8,000 unique devices.

In addition to enjoying traditional elements, including the beloved “Glencairn Horns” and other regional musicians and singers, for the first time viewers were able to quietly reflect on stunning images of Christmas-themed art and objects from the Glencairn Museum collection while listening to the performances. Thanks to the generosity of Bryn Athyn Cathedral, the large candelabras that historically adorned the Great Hall when Glencairn was the Pitcairn’s family home returned for the Sing, and the long-standing Pitcairn family tradition of children lighting candles and opening the curtains to the three Nativity box scenes made for the Pitcairns by Winfred Hyatt were reenacted.



MEMBER PROGRAMMING



MEMBER VIRTUAL LECTURES



GLENCAIRN: A HOME AND A MUSEUM (October 15)

Glencairn Director Brian Henderson presented the first in a series of Member Virtual Lectures, illustrating how the art created for and integrated into the design of Glencairn as a home reflected Raymond and Mildred Pitcairn's religious beliefs and values. He further explained how the Museum today interprets the religious objects in the Pitcairn's former collection through the Museum's mission.

SACRED ADORNMENT: JEWELRY AS BELIEF (November 12)

Dr. Jennifer Wegner, guest curator of the Museum's *Sacred Adornment: Jewelry as Belief and Practice in Ancient Egypt* and associate curator of the Egyptian Section at the University of Pennsylvania Museum of Archaeology and Anthropology, treated members to an insightful exploration of the objects in the exhibition along with an in-depth explanation of the religious motivations behind their creation and use.



STAFF PICKS (April 29)

In April, six members of the Museum staff, along with Glencairn's consultative curator of medieval stained-glass Dr. Michael Cothren, offered a virtual presentation in which staff member shared a work of art from the Museum collection that holds special meaning for them or for which she or he has a particular interest.



Thursday, April 29, 2021 | 7-8 pm



DIVERSITY AND ACCESSIBILITY



ART-REACH

Glencairn Museum established a formal relationship with **Art-Reach**, a Philadelphia-based “non-profit organization devoted to increasing cultural participation among traditionally underrepresented audiences in both the disability and low-income sectors.” In partnering with Art-Reach, the Museum now has access to translators, accessibility experts, and reduced-cost admission for ACCESS Philly card holders. The Museum also developed alternative ways for visitors with mobility challenges to engage with its inaccessible galleries, reviewed its gallery and exhibition labels to ensure that they are accessible to a wide range of visitors, and developed multi-sensory educational resources for students with a range of learning styles. These initiatives are the beginning of an ongoing effort to ensure that Glencairn Museum is available and its mission accessible to all.



INTEGRATED MUSEUM SOFTWARE

TMS

Glencairn successfully transferred its collections database to **Museum Software** (TMS), a leading integrated collections management software system currently used by more than 800 museums worldwide. TMS has the power to bring all Museum operations and programming into a single software system, integrating collections records, conservation reports, curatorial files, exhibitions, loans, educational programs, tours, events, publications, membership database, and all digital media, including photographs, videos, and online digital resources. TMS provides a unifying digital repository for all resources, linking all research, program and tour scripts, gallery and exhibition labels, images of objects, videos, and digital resources in a fully searchable and cross-referenced database, enhancing interdepartmental collaboration and increasing efficiency.



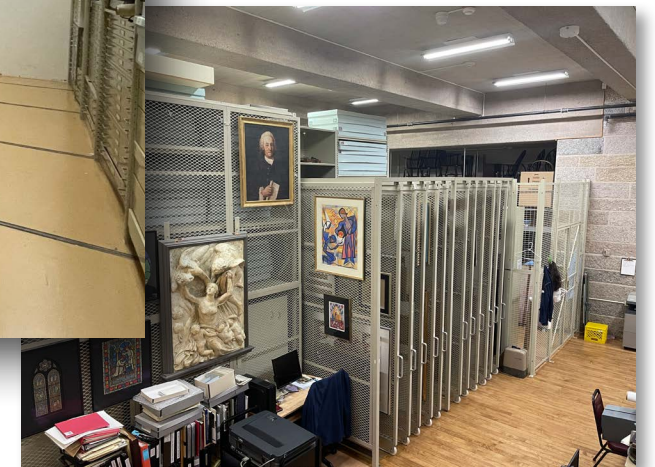


ARCHIVES



Glencairn Museum houses the Bryn Athyn Historic District Archives, which includes approximately 1,500 linear feet of works on paper and photographs related to the construction of Cairnwood Estate (former home of John and Gertrude Pitcairn), Bryn Athyn Cathedral, and Glencairn, as well as the personal records and letters of John and Gertrude Pitcairn and Raymond and Mildred Pitcairn.

Under the direction of archivist Greg Jackson, the archives staff is continuing the ongoing process of **digitizing the archival collection**. At present, digitization of all audio recordings and the Bryn Athyn Cathedral photograph collection has been completed. Current projects include the Mildred and Raymond Pitcairn photograph collection as well as the nearly 5,000 works on paper in Mildred and Raymond Pitcairn's correspondences. More than **5,000 individual works on paper and photographs** within the archive collection have been digitized and are available to researchers and the public through search engines housed on Glencairn Museum's website.



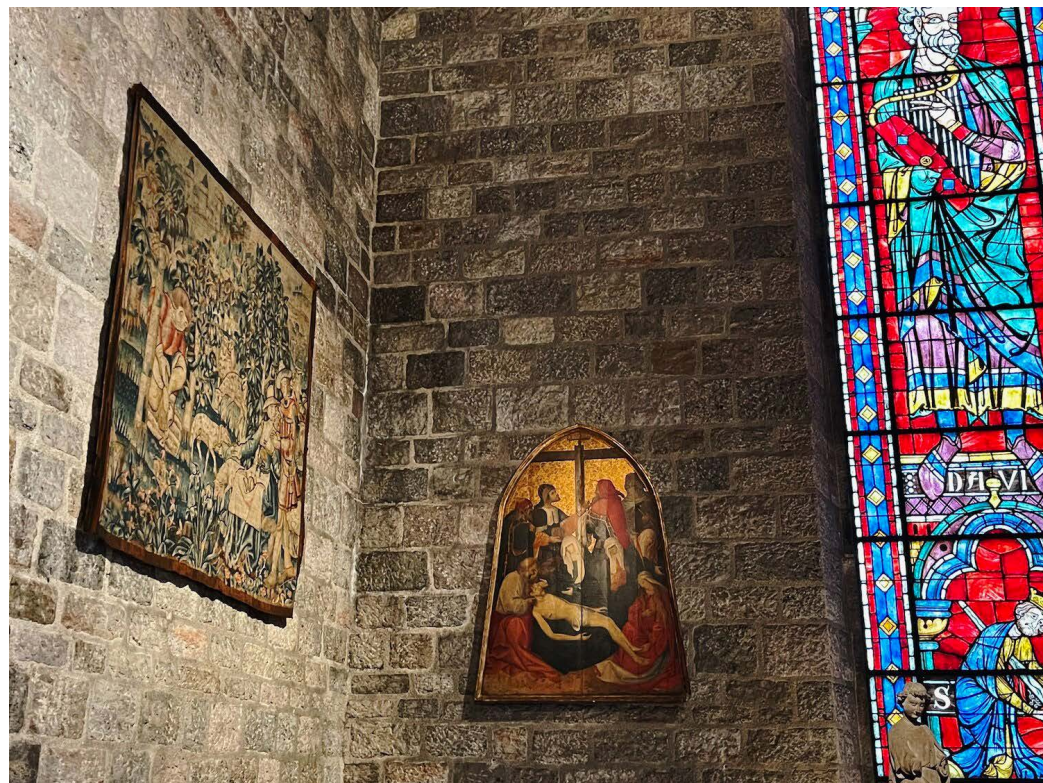
RESEARCH AND PUBLICATIONS



GLENCAIRN MUSEUM NEWS ARTICLE

Dr. Mercedes Gómez-Ferrer (professor of art history, University of València, Spain) shed new light on the historical significance of the oil on wood painting of the Deposition from Valencia in the Glencairn Museum collection. Painted between 1435 and 1440, Dr. Gomez-Ferrer argues that the “Glencairn Pieta” represents and attests to the important moment of change from the Gothic to Flemish painting style, referencing the pieces unusual shape, the nature of its subject, and its distinct pictorial characteristics. Moreover, she argues that this particular work of art played an important role in Valencian painting, demonstrating how it served as the model and inspiration for other artists painting in this new style.

<https://glencairnmuseum.org/newsletter/2021/3/26/the-glencairn-piet-a-15th-century-painting-from-valencia>



FACILITIES AND GROUNDS

Several projects were completed to preserve the integrity of Glencairn's exterior and to protect the Museum's collections. To prevent damaging water infiltration, all exterior teak window frames were restored and the plate glass windows protecting the stained-glass windows on the east and north sides of the building were reglazed. The ultraviolet protective coatings on all windows through which objects in the collections are exposed to natural light were replaced, and roughly 6,000 square feet of the granite parking terrace over Museum storage was repointed. The entrance garden at Glencairn's front gate was also replanted, including more than 300 plantings and an allée of seven paperbark maple trees.

Phase 1 of a comprehensive infrastructure replacement was approved to begin in the next fiscal year. This phase will bring a new electrical supply to the Museum (including new switchgear and main feeds in the building) and will see the installation of 27 geothermal wells in anticipation of phase 2 of the project, which is to install new heating and central air conditioning throughout the Museum.

