



GLENCAIRN  
MUSEUM

2019-2020 ANNUAL REPORT



# WELCOME

## A MESSAGE FROM THE DIRECTOR

As we reflect on the past year and its many joys, as well as the unexpected challenges, the Glencairn Museum team would like to acknowledge and thank our extended family of members, visitors, donors, colleagues, and partners for your unwavering support for our mission and various initiatives. It is because of you that we are proud to review and report on the milestones and accomplishments of 2019-2020.

## MISSION STATEMENT

The mission of Glencairn Museum is to engage a diverse audience with the common human endeavor to find higher meaning and purpose in our lives. This is achieved by recognizing universal spiritual concepts expressed in religious beliefs and practices around the world—past and present—through the interpretation of art, artifacts, and other cultural expressions of faith. A special focus of the Museum is to preserve and interpret art and artifacts that illustrate New Church (Swedenborgian Christian) beliefs and practices.

## IMPACT STATEMENT

Rooted in the notion that religion is not only believed but lived, Glencairn Museum seeks to stimulate reflection, build understanding, and foster empathy, contributing to the betterment of society by looking to the goodness in others and living a life of kindness.

# EDUCATION

## SCHOOL GROUPS

As an affiliate to the Academy of the New Church, Glencairn Museum continues its long-standing commitment as an extended classroom for the community schools in Bryn Athyn, Pennsylvania. This year, the Museum facilitated over 75 customized program visits for students who attend the Bryn Athyn Elementary School (grades 1-8), the Academy of the New Church Secondary Schools (grades 9-12), and the Bryn Athyn College in 2019-2020. Students had the opportunity to use the Museum's collections to study and understand more deeply the history, art, and religious beliefs of Ancient Mesopotamia, Ancient Egypt, Ancient Greece, the Early Christian Church, Islam, and Medieval Europe. In addition, two College courses have used the Museum as their primary classroom, utilizing the collections and researching in the Museum's archives (History 248: The Medieval World and Fine Arts 213: Bryn Athyn's Historic District). Glencairn Museum also partnered with Bryn Athyn College to promote the College's Building Arts program by hosting potential students from Williamson College of the Trades and the Kendrick Center.

Glencairn Museum's education department engages a wide range of local, public, and homeschool groups with our popular Medieval Life Tour, Ancient Cultures Tour, and special events, designed to enrich classroom and home learning and meet an array of PA curriculum standards and goals. This year, many programs for regional schools and homeschool families scheduled for the spring had to be canceled when the Museum was forced to close in response to the COVID-19 pandemic. Before the closure, the Museum was able to provide programs for three regional schools, as well as host 8 homeschool consortium visits and open houses (287 homeschool children and parents), including two days of glassblowing demonstrations.

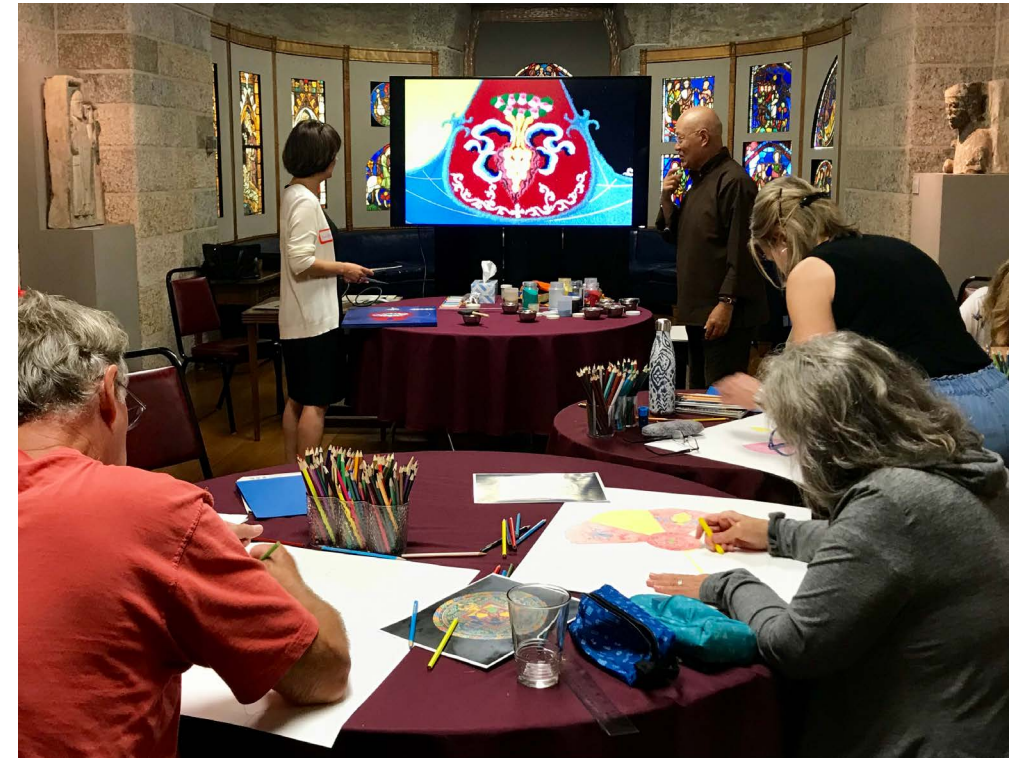


# ADULT WORKSHOPS

Each year, Glencairn Museum offers adult workshops designed to encourage continued learning, creativity, and community building among our extended family of supporters and visitors. In 2019-2020, the education department was grateful to collaborate with content experts and instructors in offering the following workshops:

## MANDALAS AS A SPIRITUAL PRACTICE (September 27 – 29)

This three-day workshop immersed participants in the Tibetan art form of the Buddhist sand mandala as an ancient and sacred means to enhance spiritual practice through imagery and meditation to overcome suffering, individually and collectively, for all living things. The Venerable Losang Samten explained the meaning behind each intentional detail of the mandala, originating in the ancient teachings of the Buddha and remaining unchanged over the centuries, before participants were guided through the hands-on process of creating their own mandala.



## MAKE YOUR OWN GLASSBLOWING (October 19 – 30)

Over 35, one-on-one glassblowing workshops were facilitated under the skilled instruction of Historical Glassworks master craftsman Jason Kline and glass artist Leslie Pierce, with each participant receiving hands-on experience with the art of glassblowing, handling glass heated at 2000°F to hand-make a medallion, suncatcher, or paperweight. Historical Glassworks has been partnering with Glencairn Museum for over 14 years on educational demonstrations and programs that explore the history of Roman, Medieval, and Bryn Athyn glass production.



# ADULT WORKSHOPS



## MAKE A CHRISTMAS COUNTRY CHURCH (December 7)

Participants in this sold-out workshop rekindled old memories or started new traditions by handcrafting a country church based on the traditional Pennsylvania German-style Christmas putz (a landscaped Nativity scene), instructed and guided by professional Nativity and Christmas ornament artists (including designs for the Kurt S. Adler Company) Karen Loccisano and R. Michael Palan. As part of the workshop, guests were able to view a historical Jennie Trein Christmas putz on loan to Glencairn Museum from the Moravian Historical Society and featured in Glencairn Museum's *World Nativities* exhibition.

## SACRED ADORNMENTS (February 29 and March 7)

Participants received exclusive access to, and a customized tour of, the newly opened exhibition: *Sacred Adornment: Jewelry as Belief in Ancient Egypt* as well as jewelry displayed in the Museum's Egyptian, Greek, and Roman galleries, followed by a make-your-own beading workshop focusing on the religious symbolism of beads throughout history.





# PUBLIC PROGRAMMING



## FESTIVAL AND OPEN HOUSE

### MEDIEVAL FESTIVAL (October 27)

Glencairn Museum's popular annual Medieval Festival creates a portal to the past for families and visitors of all ages to explore the religious practice, beliefs, and artistic expressions of the Middle Ages. This fall, 350 visitors experienced manuscript illumination, stained glass painting, glassblowing, and live religious music from the period and traveled on a Pilgrim's self-guided quest to learn about religious sites in Medieval Europe through the Museum's most significant medieval objects, during which participants were invited to try their hand at medieval crafts.



### PRE-TRICK-OR-TREATING SCAVENGER HUNT (October 31)

A favorite October event, this year saw our largest attendance (over 250 children and their parents) for our Harry Potter-inspired scavenger hunt. With the addition of a stop in the Chapel and a question that tied into our temporary *Hex Signs: Sacred and Celestial Symbolism in Pennsylvania Dutch Barn Stars* exhibition, children enjoyed the magical atmosphere of Glencairn transformed into Hogwarts through skillful decorations made by the creative Museum staff, who interacted with the children at various stops. A special treat was glassblowing magic with special costumed guests Jason Klein and Leslie Pierce (Historical Glassworks), who created one-of-a-kind mystifying wonders including magic wands, talismans, potion bottles, and more.





# TOURS

Nearly 5,200 visitors experienced Glencairn Museum through a guided scripted tour (with an additional 3,500 taking a self-guided tour of Glencairn's first floor and temporary exhibitions), engaging them with the most significant art and artifacts within the Museum's collections, and exploring how they illustrate the religious beliefs and practices of people throughout a range of cultures and time periods. Each tour also highlights Glencairn as a former New Church (Swedenborgian Christian) home, embedded with artistic expressions of New Church beliefs in stained-glass, stone, metalwork, wood, mosaics, and more, created by the Bryn Athyn craftsman during its construction.

## HIGHLIGHTS TOUR

Glencairn Museum's most popular tour introduces visitors to Glencairn as a former home and to the Museum's mission, engaging them with universal spiritual principles that have existed throughout human history (e.g., acknowledgement of the Divine, leading a good life, etc.). The tour interprets key works of art within the Museum's collections as cultural expressions of belief and practices, including those of the New Church, of which the Pitcairn family were members. An introductory video presents Glencairn Museum within the context of the history of the Bryn Athyn community and the Academy of the New Church, explaining the relationship between the Museum and its neighbors, the Academy of the New Church Secondary Schools, Bryn Athyn College, Cairnwood Estate, and Bryn Athyn Cathedral.

## TIME TRAVELERS: A FAMILY BACKPACK TOUR

This interactive tour engages children with museums, art, and iconography, seeking to prompt curiosity about other people, time periods, and cultures through their religious beliefs and practices. Using the metaphor of a time machine, children travel to ancient Egypt, ancient Mesopotamia, ancient Greece, and medieval Europe trying their hand with Egyptian hieroglyphs, Mesopotamian cuneiform tablets and cylinder seals, Greek coins, Roman numerals, and compasses.





# TOURS

## CHRISTMAS IN THE CASTLE TOUR

This Christmas season, more than 2,300 visitors engaged with the Nativity story through both medieval works of art within the Museum's collections and Nativity artwork created for Glencairn as a home. The tour includes a guided introduction to the Museum's *World Nativities* exhibition which displays dozens of three-dimensional Nativity scenes from around the world, revealing how artists adapt the Nativity story to represent their own spiritual, intellectual, cultural, and regional environments.

## STAINED-GLASS TOUR

Glencairn Museum offered stained-glass-themed tours to the general public for the first time in October. Tours began with a glassblowing demonstration led by Jason Klein (Historical Glassworks), followed by an in-depth tour of the medieval and reproduction stained-glass windows on display in the Museum galleries. These first-ever stained-glass tours were so popular that they will be part of Glencairn's annual offerings moving forward.



PUBLIC PROGRAMMING





# EXHIBITIONS

## SACRED AND CELESTIAL SYMBOLISM IN PENNSYLVANIA DUTCH BARN STARS (through November 3)



This exhibition explored themes of sacred and celestial imagery in the traditional arts of the Pennsylvania Dutch, with special emphasis on the decorated barns of Southeastern Pennsylvania. Featuring actual examples of barn stars, decorated objects, and related images, the exhibition was guest curated by Patrick Donmoyer, director of the Pennsylvania German Cultural Heritage Center at Kutztown University, and author of *Hex Signs: Myth and Meaning in Pennsylvania Dutch Barn Stars* (2013).

## WORLD NATIVITIES (November 29 – January 5)

More than 4,700 visitors enjoyed Glencairn Museum's 11th annual *World Nativities* exhibition, which presented 45 three-dimensional Nativity scenes from around the world, including several on exclusive loan from the Knights of Columbus Museum in New Haven, Connecticut in addition to outstanding examples from Glencairn Museum's own collection. For centuries, the story of the birth of Jesus Christ has been depicted through the creative lens of artists from a wide variety of spiritual, intellectual, and cultural backgrounds, lending testimony to the universal power and appeal of the Christmas story, while also illustrating the beautiful variety through which artists have chosen to depict the human figures, clothing, animals, and settings to give the universal power of the story deeper relevance and meaning to their particular culture.



## EXHIBITION | SACRED ADORNMENT: JEWELRY AS BELIEF IN ANCIENT EGYPT (Feb. 29 – March 12)

This exhibition features stunning jewelry created by ancient Egyptians in a wide variety of materials. Curated by Dr. Jennifer Wegner, Associate Curator in the Egyptian Section at the Penn Museum, and designed and installed by Glencairn Museum staff, this exhibition of jewelry from Glencairn Museum's collection explores how these beautiful pieces were used by both the living and the dead to adorn, to protect, and to express devotion to the divine. Regrettably, visitors were only able to visit this exhibition for two weeks prior to the Museum closing due to health safety restrictions resulting from the COVID-19 pandemic. Glencairn plans to reopen the exhibition when it can do so safely and according to state and local guidelines.





# LACHLAN PITCAIRN CONCERT SERIES

## LES CANARDS CHANTANTS: SONG OF SONGS – JOIE DE VIVRE IN 16TH-CENTURY MUNICH (Oct. 11)

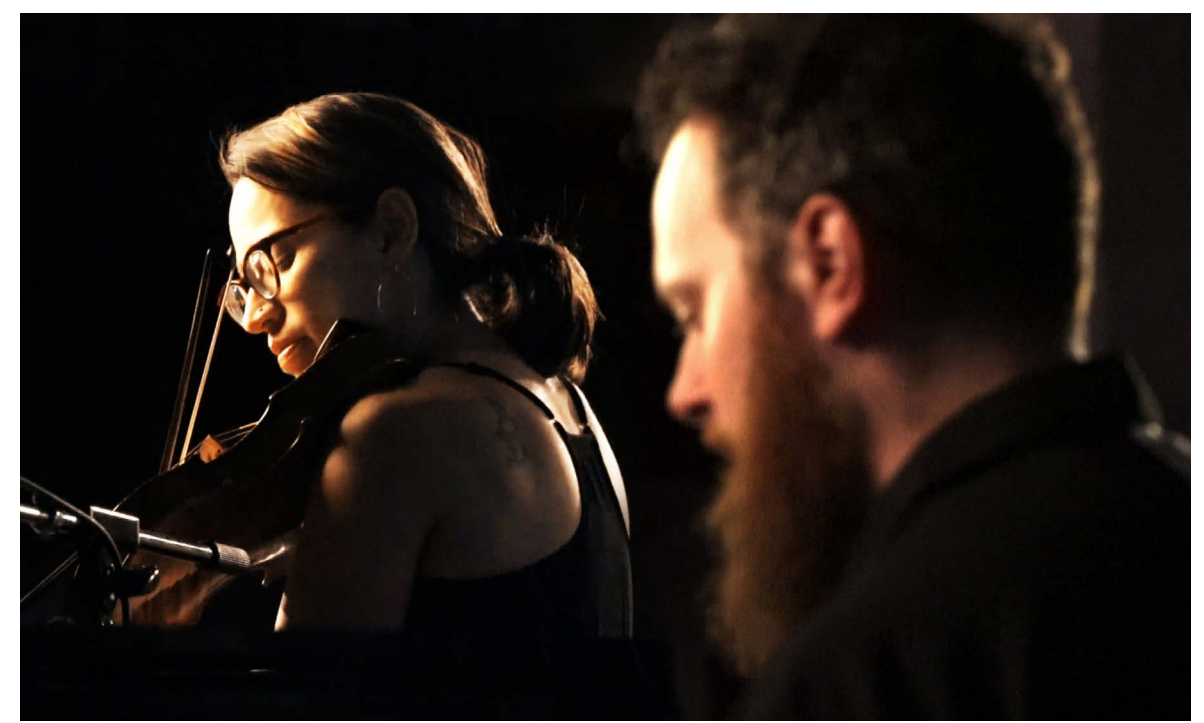
Glencairn Museum’s Ensemble in Residence performed an evening of music in front of an audience of 100 in Glencairn’s Great Hall. The program was drawn from composers connected through the Bavarian court in Munich, including Orlande de Lassus, one of the most prolific and respected musicians of the late Renaissance.

## GLENCAIRN CHRISTMAS SING CONCERT (December 11)

A long-standing community tradition since the beginnings of Glencairn as a home for the Pitcairn family is hosting a community event known as the Glencairn Christmas Sing. A full house attended the 82nd annual Glencairn Sing this year, enjoying performances by the Glencairn Horns, The Academy of the New Church Secondary Schools Concert Choir, soloists from the Bryn Athyn Choristers Seraphim Choir, and Les Canards Chantants, as well as singing Christmas hymns and reflecting on readings from the Bible’s Christmas story. Notably, four members of the audience had attended the inaugural Glencairn Sing in 1937!

## CONCERT | 1 IN 2 (January 24)

More than 100 guests attended this violin and piano duet born out of a great variety of contrasting musical styles and approaches. Blanca Cecilia González (violin) and Jesse Elder (piano) have found a wealth of musical inspiration in their process of marrying elements of classical music with jazz, Latin, original compositions, various popular music styles, and free improvisation.



PUBLIC PROGRAMMING

# MEMBER PROGRAMMING

## ANNUAL MUSEUM TRIP

MUSEUM OF THE BIBLE  
(Washington, D.C.)

27 Museum members and Glencairn Museum staff traveled to the 430,000-square-foot **Museum of the Bible**, which opened in 2017. Spanning 3,500 years of history, Museum of the Bible offers visitors an immersive and personalized experience with the Bible and its ongoing impact on the world around us, with galleries dedicated to Stories of the Bible, the Impact of the Bible, and the History of the Bible. Participants immersed themselves in the Old and New Testaments through an interactive walk-through of stories from the Old Testament and visiting with period interpreters in a recreated 1st century village of Nazareth, as well as appreciating artwork depicting Biblical themes.





# COLLECTIONS CARE



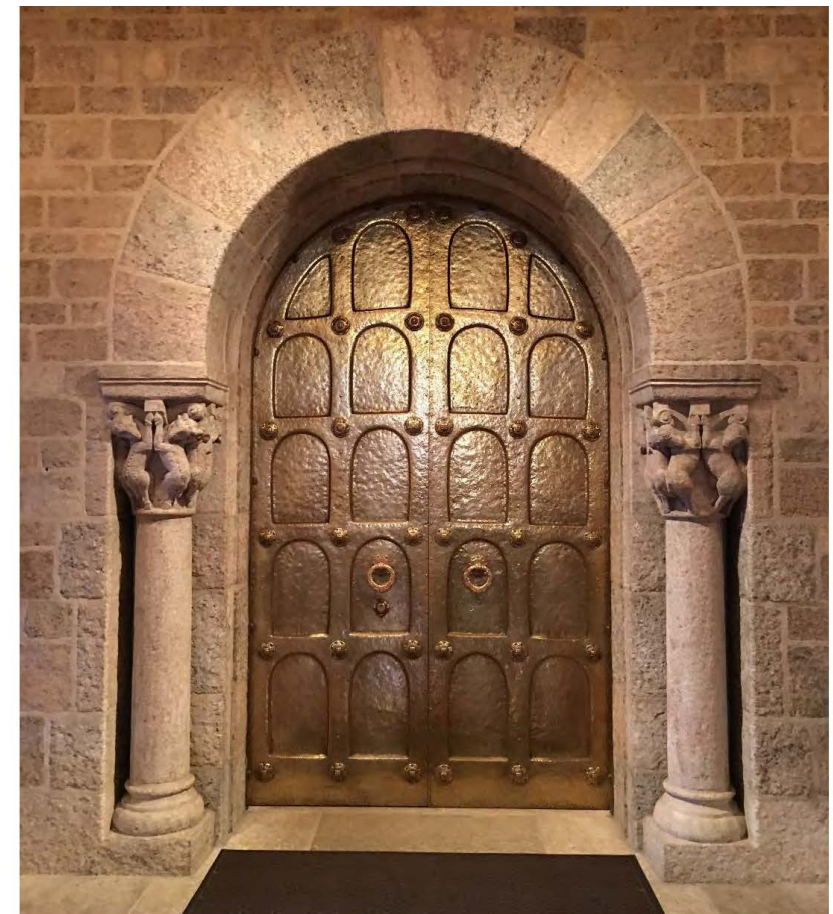
## CONSERVATION AND PRESERVATION

### CONSERVATION ASSESSMENT

Glencairn Museum completed a comprehensive collections assessment of all stone and wooden works of art and antique furniture within the Museum's collections, conducted by Materials Conservation, LLC, the largest conservation firm in the Philadelphia region. Condition Reports document the current condition of each object, written and photographic documentation, recommendations for conservation treatment, prioritization of objects in need of conservation, and estimated treatment time. Assessing conservation needs is merely the first step in responsible stewardship. It is paramount that the Museum administration now ensure that sufficient funds are available to perform the necessary conservation work on those objects identified for priority conservation.

### PRESERVING GLENCAIRN'S ORIGINAL FINISHES

Materials Conservation completed and provided to Glencairn Museum a comprehensive Custodial Manual, detailing the latest industry best practices for "Free and Clear" products to ensure human safety and museum best practice techniques to ensure proper and responsible cleaning, care, and preservation of Glencairn's original finishes. As part of this project, two Materials Conservation conservators worked collaboratively with Glencairn Museum staff and the Museum's floor maintenance vendor to test new products in re-waxing the historic teak floors throughout Glencairn. While many of the policies and procedures had already been in place at the Museum, it is an important step to have them approved, improved, and gathered into one user-friendly document by conservation professionals.



## GLENCAIRN MUSEUM CUSTODIAL MANUAL

Prepared by  
**MATERIALS  
CONSERVATION**  
1625 North Howard Street  
Philadelphia, PA

January 2020

# OBJECT LOANS AND PROFESSIONAL DEVELOPMENT

## OBJECT LOANS

Glencairn Museum's Virgin and Angel sculpture was on display at the **Metropolitan Museum of Art** (on loan October 2 – January 5) as part of its groundbreaking exhibition entitled *The Last Knight: The Art, Armor, and Ambition of Maximilian I*, which was “the most ambitious North American loan exhibition of European arms and armor in decades.” Glencairn Museum's sculpture was one of 180 objects carefully selected from thirty public and private collections in Europe, the Middle East, and the United States, including armor, sculpture, manuscripts, paintings, sculpture, glass, and tapestries.

Five objects from Glencairn Museum's collections—two sculptures and three panels of stained glass—were on display at the **McClung Museum of Natural History and Culture** (Knoxville, TN), where they were featured in *Visions of the End* (January 31 – May 10), an exhibition exploring the Apocalypse through works of art inspired by the Book of Revelation. As published on the McClung Museum website, “The exhibition features twenty-six pieces of medieval and Renaissance art from **some of the country's finest collecting institutions**, including the Free Library of Philadelphia, **Glencairn Museum**, the Metropolitan Museum of Art, the Morgan Library and Museum, the National Gallery of Art, and the Walters Art Museum, offering visitors a rare chance to explore medieval and Renaissance art of the Apocalypse in works never before displayed in Tennessee.”



## PROFESSIONAL DEVELOPMENT

In November (November 13 – 15), Christine McDonald (*Glencairn Museum, Head of Education and Program Development*) represented Glencairn Museum at the prestigious Designing for Empathy Summit in Washington, D.C., hosted by the world’s leading authority on empathy in museums Dr. Elif Gokcigdem. Only the second such international summit of its kind, Christine was one of an exclusive 32 participants, all of whom were personally selected and invited by Dr. Gokcigdem from among “thought leaders, museum professionals, artists, scientists, and social entrepreneurs...to exchange ideas, learn together, and get inspired to intentionally design those systems, spaces, and experiences that foster empathy...”

Glencairn Museum staff recently visited the **University of Pennsylvania Museum of Archeology and Anthropology** twice to meet with and exchange ideas with Penn Museum staff. In November, the Museum’s Education Department met with Elizabeth Potens, School Visit Coordinator and Homeschool Specialist, to discuss public engagement through educational programming and to observe first-hand Penn Museum tours of their Egyptian, Greek, and Roman collections. While there, they took part in the “Daily Dig,” an intensive examination of a single object in the collection delivered by a University of Pennsylvania graduate student.

In preparation for the Museum’s exhibition of its Egyptian jewelry collections, ten members of the Glencairn Museum staff returned to Penn Museum in early January, where they met with Dr. Jennifer Wegner (Associate Curator, Egyptian Section) and Edward Reidell (Director of Visitor Services), as well as asking questions of one of Penn Museum’s conservators while she was conserving and restoring a piece from the museum’s Egyptian Collection.





# HOSTING AND OUTREACH



## BAC PRESIDENT'S ADDRESS (August 27)

Bryn Athyn College students enjoyed desserts and mingled with faculty, staff, and administrators in Glencairn Museum's Cloister garden before proceeding to the Great Hall, where President Brian Blair welcomed the new students and delivered an address to open the academic year. The event concluded with a candlelit procession back to the college campus.

## ANCSS NEW GIRLS TEA (August 28)

The Glencairn Museum Education Department hosted the annual New Girls Tea for incoming ANCSS Girls School students. This event provides an opportunity to connect with and inspire students who haven't yet experienced the Museum, as well as foster a welcoming sense of community and support between ANCSS Girls School students, faculty, and Glencairn Museum staff. Kira Runyan, Brian Henderson, Christine McDonald, and Leah Smith introduced the new students to the many ways that Glencairn Museum will be a part of their academic lives during their time at the Girls School.

## CHARTER DAY 50TH CLASS REUNION DINNER (Oct. 4)

Glencairn Museum hosted the Academy of the New Church Secondary Schools Class of 1969, who enjoyed a reunion dinner in the Museum's Upper Hall.

## BAC MEN'S SOCCER (October 8)

Coach Bill O'Neill arranged a team-building outing for the Bryn Athyn College's men's soccer team to Glencairn Museum, where museum director Brian Henderson shared lessons he has taken away from his journey of physical recovery over the past year, and how these lessons might be translated to the soccer field as athletes and teammates. Themes shared with the players included: 1. the goal of living simply by focusing our lives on our core values, of emphasizing what we can do rather than what we cannot, and living and playing within ourselves, 2. the power of kindness, recognizing the life-changing impact that our seemingly small gestures of kindness can have on another's life and the power of placing others and their success over our own, and 3. The importance of finding genuine peace in the present while never settling—never ceasing to strive to improve as a person, player, and teammate.

## ANCSS SENIOR GIRLS MEDIEVAL PILGRIMAGE (October 14)

This evening event highlighted student-made medieval food and performances connected to their studies of Chaucer's Canterbury Tales and medieval works of art within Glencairn Museum's collections. As always, the event included talented musical, theatrical, and storytelling performances, and ended with a hearty rendition of the prologue to Chaucer's work in the original Middle English.





## THE GOLDEN GLOW OF CHRISTMAS PAST (July 15)

The Golden Glow of Christmas Past, a non-profit organization focusing on the history and material culture of Christmas, visited Glencairn Museum during their annual convention titled, "A Pennsylvania Christmas." Attendees enjoyed tours of Christmas art (medieval to modern), Christmas decorations once used by the Pitcairn family at Glencairn, and a chance to interact with contemporary Nativity artists, including Kathleen Glenn Pitcairn, who demonstrated her techniques for creating settings for Nativities; the husband-and-wife Nativity team of Michael Palan and Karen Loccisano, who brought some of their major works; and Michael Stumpf and AJ DiAntonio of Navidad Nativities in Bucks County, who display original handcrafted Nativity scenes in Glencairn Museum's *World Nativities* exhibition.



## CONSULAR CORPS ASSOCIATION OF PHILADELPHIA (October 11)

Brian Henderson and Mr. John Medveckis (Honorary Consul, Latvia) hosted the Consular Corps Association of Philadelphia at Glencairn Museum for a cocktail reception, during which Consuls from around the world were introduced to the Museum, its mission, and its collections. The Consul Corps of Philadelphia is the oldest such organization in the country and today represents 63 countries, promoting commercial, cultural, educational, and governmental relationships between the Philadelphia region and their respective countries, and serving the diplomatic needs of foreign citizens and visiting dignitaries in Philadelphia.





## THE SPIRIT OF CHRISTMAS AT BYERS' CHOICE AND GLENCAIRN MUSEUM

(November 23 and 24)

For the second year, Glencairn Museum partnered with Byers' Choice Ltd. to promote Christmas offerings at both locations, including projects, a preview of Glencairn Museum's *World Nativities* exhibition and Christmas in the Castle tour, and a stroll down Byers' Choice's Dickens Street through displays of Byers' Carolers past and present.



## CHRISTMAS VILLAGE IN PHILADELPHIA

(November 28 – December 24)

Glencairn Museum and the Bryn Athyn Historic District partnered with the Christmas Village in Philadelphia to cross-promote our Christmas offerings. A popular outside Holiday market event in Center City Philadelphia modeled after the traditional Christmas Markets in Germany, the Christmas Village boasts more than 80 wooden booths selling international holiday gifts, ornaments, jewelry, arts and crafts, and traditional European food.



# RENTALS

## GENERATING REVENUE TO SUPPORT MUSEUM PROGRAMMING

Glencairn Museum has hosted 44 rental events, including 14 Tower events, 20 wedding photography sessions, and 6 dinners or receptions in the Great or Upper Halls.



# FACILITIES

## CLOISTER GLASS DOORS AND SHUTTER INSTALLATION

Warren Holzman, who has done metal work at both Glencairn Museum and the Bryn Athyn Cathedral, worked closely with Glencairn Museum staff members to design and install tempered glass and stainless-steel hinges to enclose the Cloister with glass doors and shutters. This design provides uninterrupted views from both inside and outside the Cloister even while the doors and shutters are closed, allows for private events in the Cloister, and secures the Cloister when the Museum is closed.



## NORTH PORCH

Under the direction of Drew Nehlig and Luke Betz (Historic District Buildings Managers), Glencairn Museum's North Porch roof was replaced to mitigate water infiltration. The rotted substrate was replaced, the granite coping stones were removed so that flashing could be installed, the granite walls were repointed, and the new roof was coated with a waterproofing membrane surface.





# THE COVID-19 PANDEMIC



## A SHIFT TO DIGITAL PROGRAMMING

**G**lencairn Museum was forced to close to the public on March 13, 2020 due to state and local health safety guidelines in response to the global COVID-19 pandemic. While this sadly resulted in the need to cancel all in-person programming for the remainder of the year, the Museum staff was able to quickly pivot to developing new and creative ways to remain connected with its audience digitally, as well as researching, writing, and developing new programming.

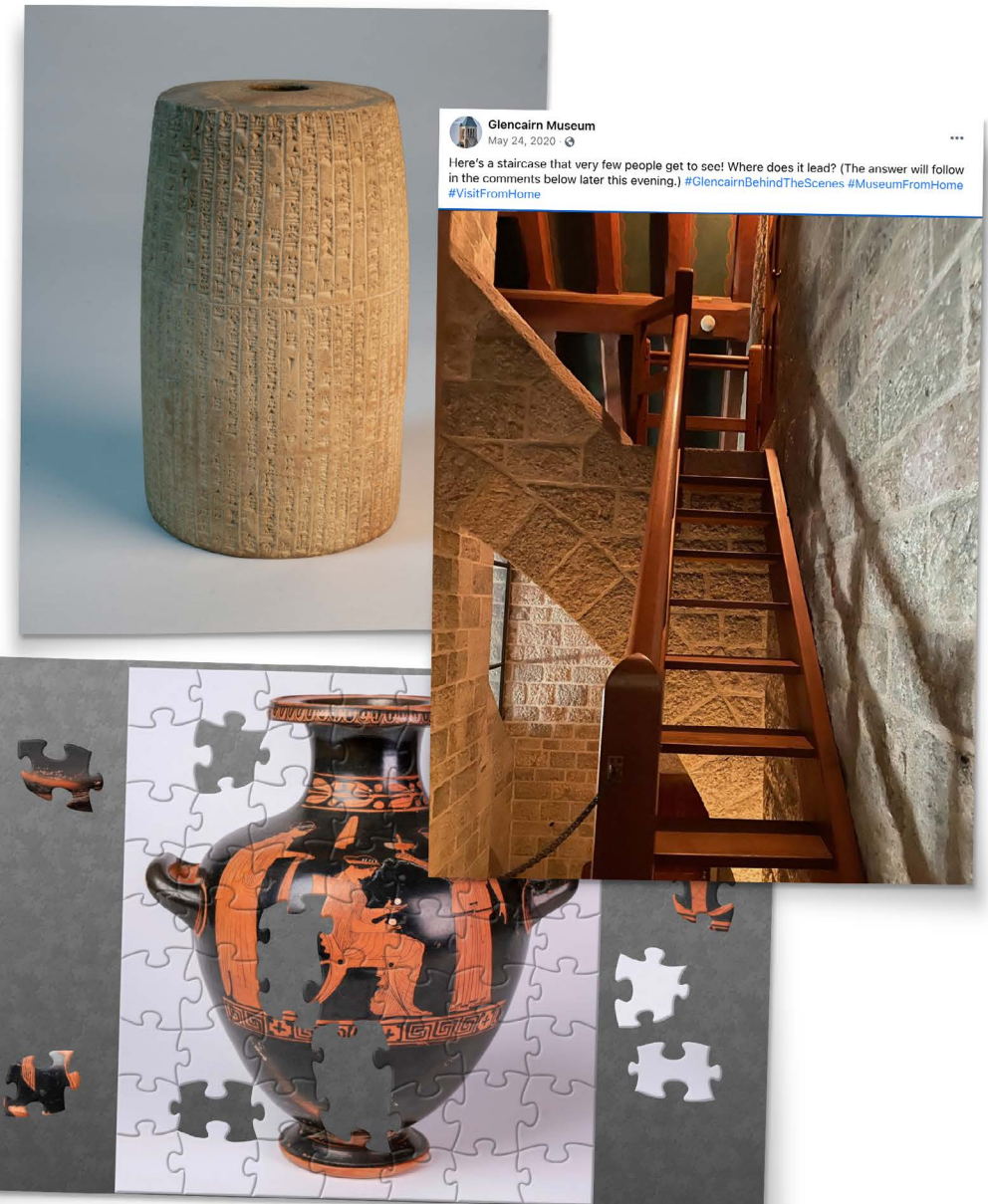
### GOOGLE ARTS AND CULTURE

Glencairn Museum joined over 2,000 organizations worldwide as an official partner with Google Arts & Culture, whose mission is “to preserve and bring the world’s art and culture online so it’s accessible to anyone, anywhere.” The Google platform includes hi-resolution, “zoomable” photos of over 150 Glencairn Museum objects, as well as an “online exhibit” version of the temporary exhibition, *Sacred Adornment: Jewelry as Belief in Ancient Egypt*.

### EXPANDED SOCIAL MEDIA PRESENCE

As our communities were being asked to “stay at home” in response to the COVID-19 pandemic, Glencairn Museum expanded its social media presence on Facebook, Instagram, Tumblr, Twitter, and YouTube, providing virtual access to parts of the Museum not normally visible to the public, including objects on storage ([#GlencairnBehindTheScenes](#)); publishing photos of and videos about objects in our permanent collection ([#GlencairnUpClose](#)); and sharing spring and summer photographs of Glencairn’s gardens ([#MuseumBouquet](#)) and historic photographs of Glencairn in the “early days” ([#ThrowbackThursday](#)).

Glencairn Museum also established an online presence with Jigsaw Planet, with the goal of helping our audience slow down and take the time to carefully look at, and think about, the fine details of individual works of art in Glencairn’s collections.





## NEW ONLINE VIDEO SERIES

As part of Glencairn Museum's effort to stay connected with its audience while it was closed during the COVID-19 pandemic, the Museum launched three new online video series: "Meet the Artist," "Glencairn Up Close," and "Glencairn Museum Kids." Examples available on Glencairn Museum's YouTube channel include: "A Tile for Glencairn Museum" (with featured artist Christina Orthwein); "The Legend of the Seven Sleepers of Ephesus" (with stained-glass expert Dr. Michael Cothren); "Red-Figured Hydria (with Dr. Wendy Closterman from Bryn Athyn College); and "Stained-Glass Project for Kids" (with Amy Glenn, Educational Programs Manager).



## ONLINE EDUCATIONAL MATERIALS

While Glencairn Museum was closed and unable to host teachers and students in person, Amy Glenn (Educational Programs Manager) began to develop online opportunities for students to explore Glencairn Museum and its unique collections as well as resources to support teachers in their curriculum, in the areas of ancient cultures, life in the Middle Ages, and medieval stained glass. Teacher and student resources include: 1. information on objects in the collections with images and articles to provide further information, 2. leading questions to teach students how to "read" art and artifacts, 3. suggestions for hands-on activities, and 4. questions for discussion. Additional resources for younger students include hands-on projects for a variety of ages and coloring pages of objects in Glencairn Museum's collections.



## GLENCAIRN MUSEUM NEWS

*Glencairn Museum News*, a free publication posted online 12 times per year, features articles about Glencairn Museum and its collections. During the pandemic shutdown the Museum published “Sacred Adornment: Jewelry as Belief in Ancient Egypt”; “Interview with Dr. Charles T. Little: Reflections on the Early Days of Glencairn Museum” (see photo below); and “#MuseumFromHome: Staying Connected During Quarantine.” The most recent issue explores the various efforts Glencairn Museum has made to stay relevant and connected with our audience during the COVID-19 pandemic, when people are unable to visit the Museum in person.

### INTERVIEW WITH DR. CHARLES T. LITTLE: REFLECTIONS ON THE EARLY DAYS OF GLENCAIRN MUSEUM

April 13, 2020

*Glencairn Museum News* | Number 3, 2020



COVID-19 PANDEMIC



# CONNECTING WITH THE COMMUNITY



## THANKING FRONTLINE WORKERS

In April, Glencairn Museum staff provided 120 lunches from the local All Aboard Café to the Intensive Care and radiology units at **Abington Memorial Hospital**, along with this message: “We would like to thank all of the healthcare workers who put themselves at risk every day to help those in need during the COVID-19 outbreak. You are doing an amazing job, and we will forever be grateful. #HealthCareHeroes #HealthcareWorkers.”

Glencairn Museum also hung a banner at its Huntingdon Pike entrance thanking healthcare professionals and all other essential workers, and Museum staff personally funded 100 masks handmade by a Bryn Athyn business owner, which we delivered in person to **Holy Redeemer Hospital**.

## CAIRNWOOD VILLAGE

The Glencairn Museum staff also provided a breakfast and a lunch on different occasions to the residents of Cairnwood Village, a local retirement home, many of whom are longtime supporters of Glencairn Museum, and who we look forward to seeing again in person at the Museum when we can safely reopen in the future.

