

Three Wise Men Gifts Ornaments



Follow the illustrated instructions below to make three boxes to hang on your tree - you can even put tiny gifts inside! Inspired by the gifts the wise men brought to the child Jesus - gold, frankincense and myrrh.

For each type of gift box, you can decorate in any way you like, painting, drawing, coloring, sticking on jewels or covering in mosaics, like on the mosaic covered arch in Glencairn's Great Hall. For how to make paper mosaics, see the bottom of the page.

Materials

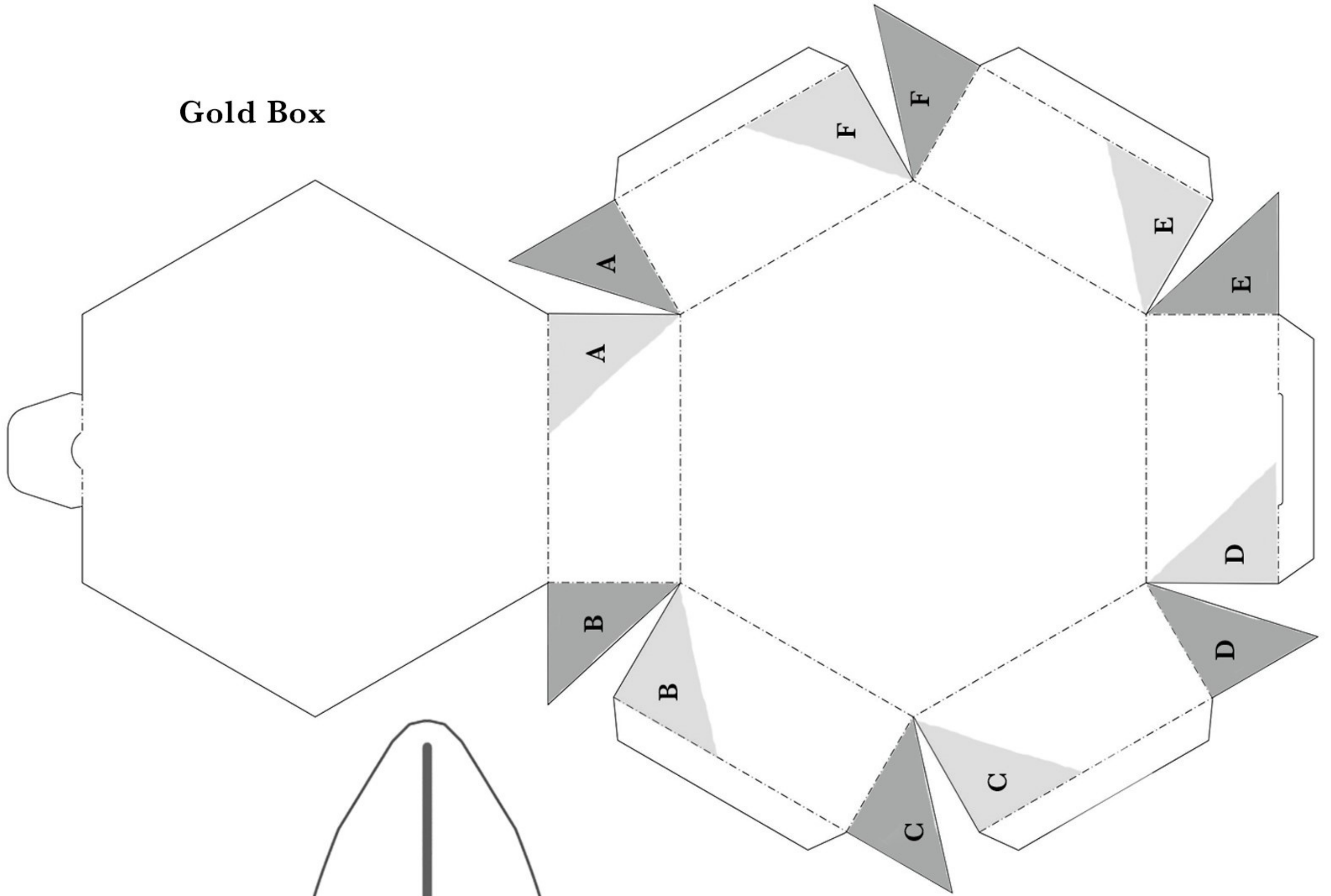
- A piece of heavy printable cardstock 8.5 x 11 inches The example uses gold cardstock, but you can use any color, since you will be decorating it.
- Printer to print the templates
- Large needle
- Scissors
- Craft knife or narrow scissors for cutting slits
- String for a hanging loop
- Small scraps/pieces of colored paper for mosaics
- OR coloring materials and a plain piece of paper or cardstock for mosaics
- Glue stick or Glue Dots
- A grownup to help as needed

To make mosaics:

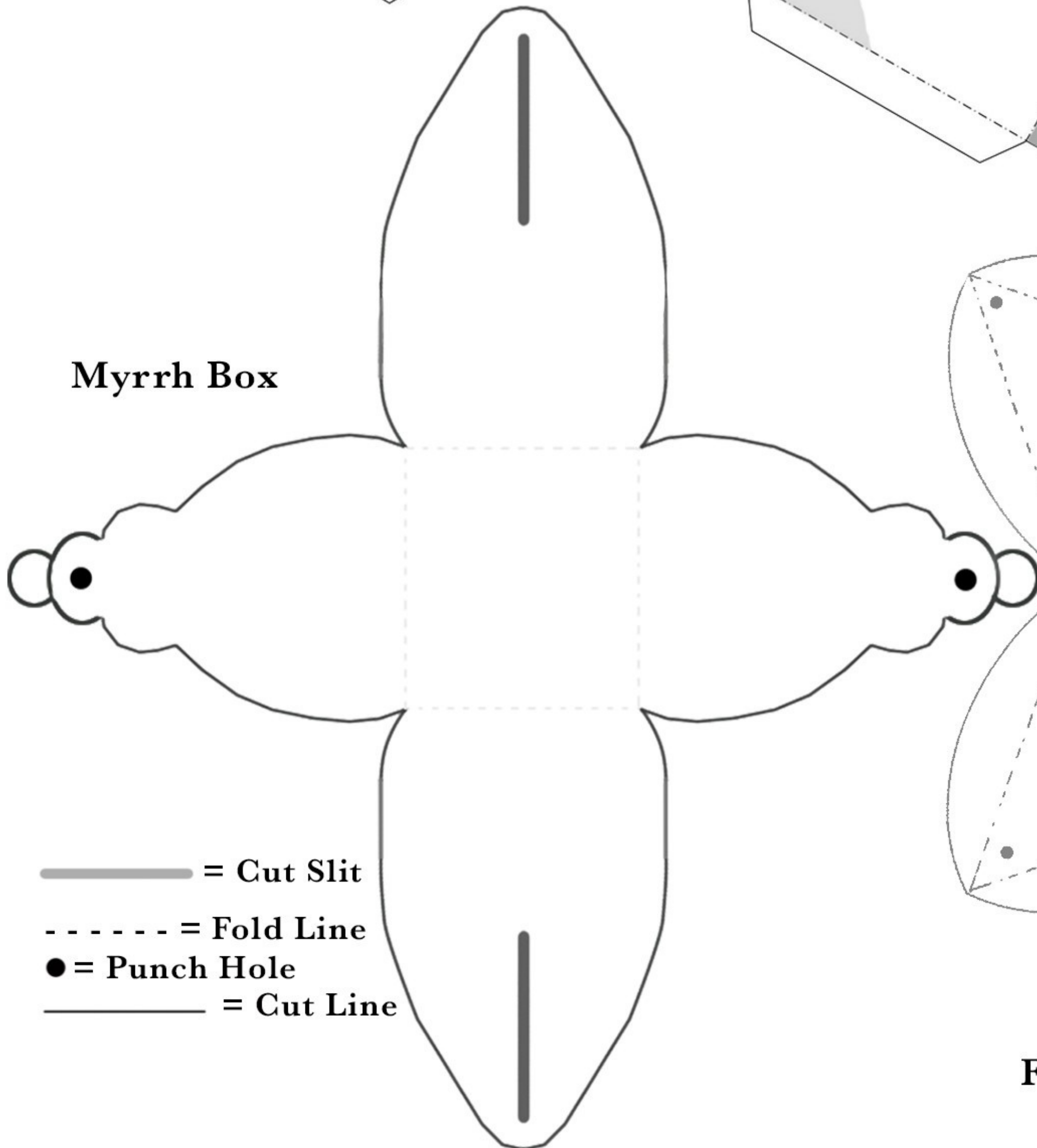
- Choose several colors of paper or card
- Cut strips from each piece
- From the strips, cut small squares and triangles







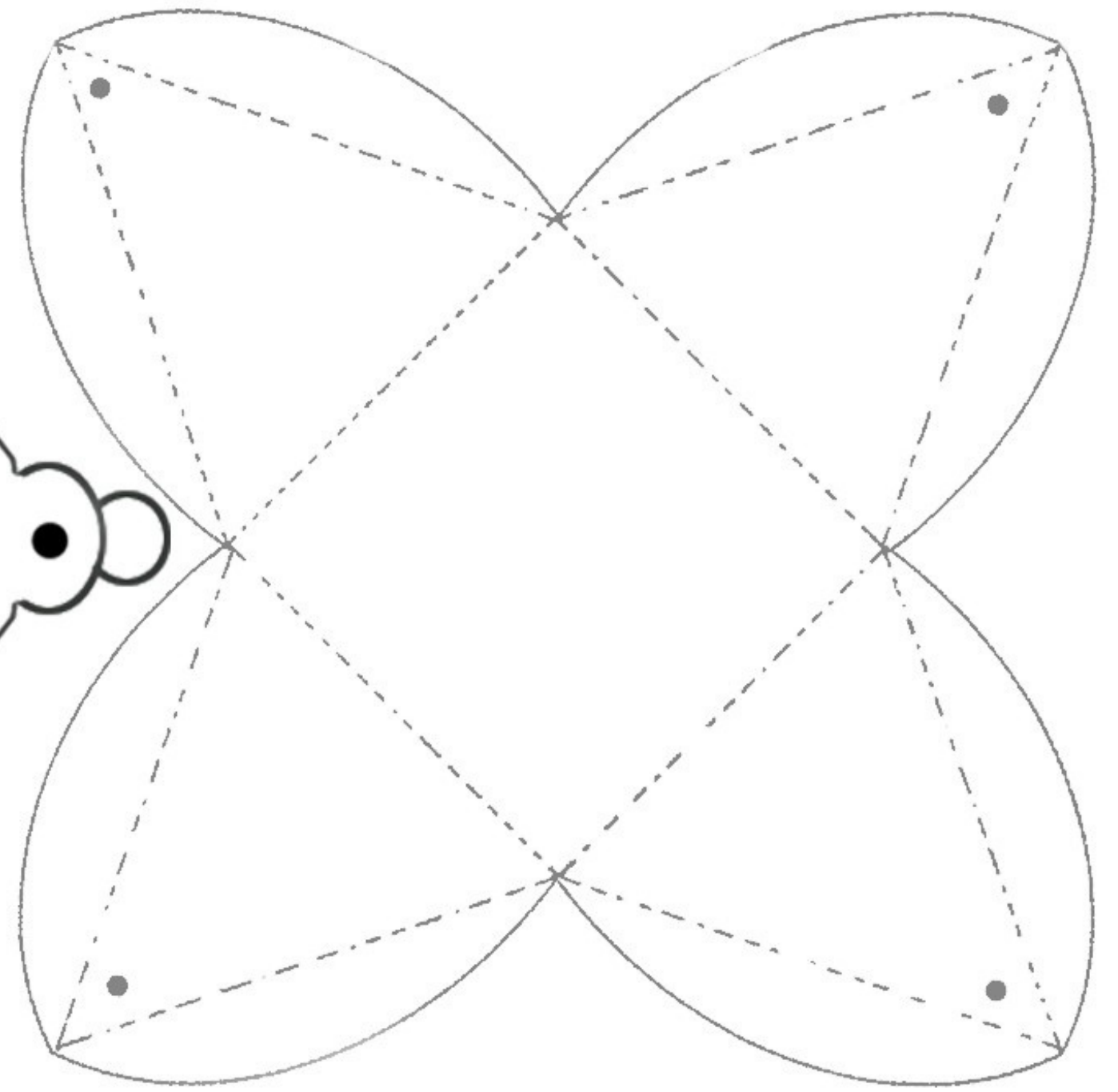
Gold Box



Myrrh Box



-  = Cut Slit
-  = Fold Line
-  = Punch Hole
-  = Cut Line



Frankincense Box

Gold Box Ornament

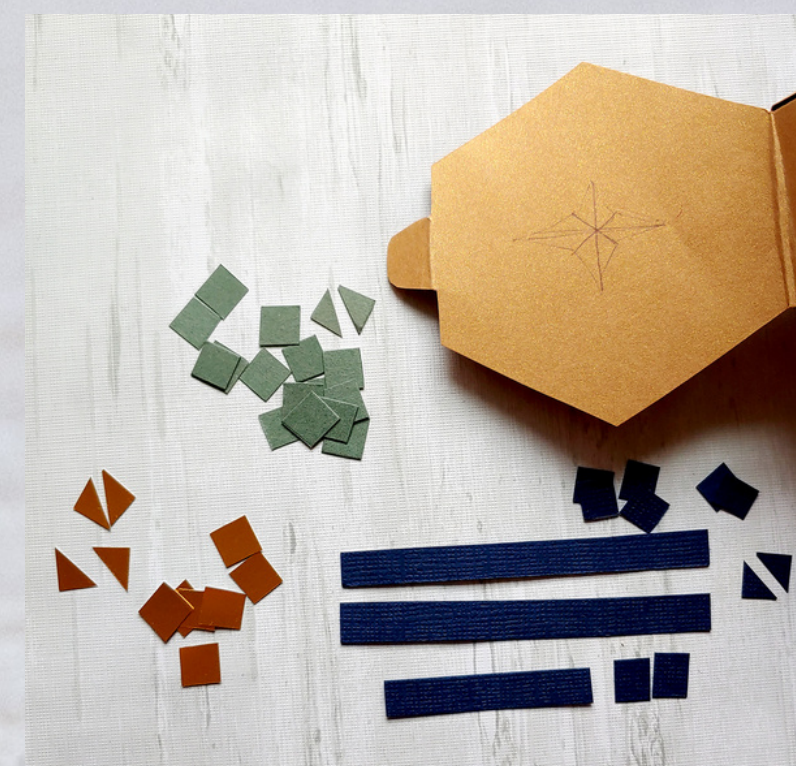
Step 1

- Print out the template on heavy cardstock paper, any color you'd like.
- Cut out all solid lines (do not cut out dotted lines).
- Fold all dotted lines inwards so the printed side is on the inside.



Step 2

- Flip over and decorate the opposite side of the paper (non printed side) on all rectangle panels, and the hexagonal lid of the box.
- Glue or Glue-dot each dark triangle to its matching letter triangle. (A to A, B to B)
- Tuck tab from the lid into the tab on the side of the hexagonal box to close the gift.
- Add a string so it can hang on the tree.



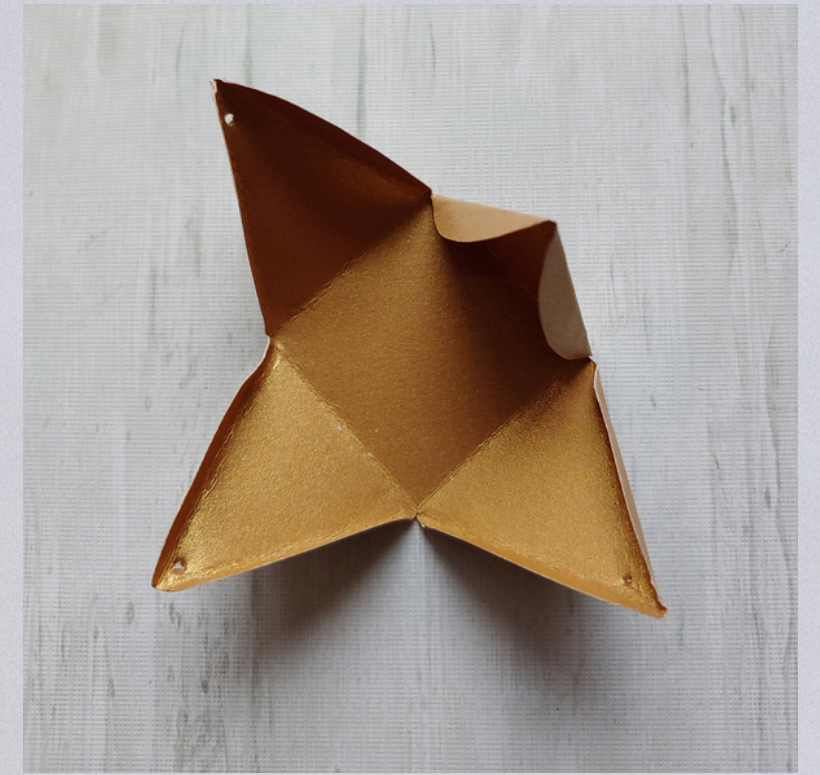
All done!



Frankincense Box Ornament

Step 1

- Cut out all solid lines (do not cut out dotted lines).
- Fold all fold (dotted) lines inward so the printed side is inside.



Step 2

- Flip over onto the other side (non printed side) and decorate the triangle panels with mosaics, drawing, painting, stick on jewels, coloring, or whatever you want!
- Punch four holes where the dots are printed).



Step 3

- Folding long tabs in, bring all four sides up into a pyramid.
- Weave a string or narrow ribbon through the holes to close the pyramid and for hanging it on the tree.



All done!



Myrrh Box Ornament

Step 1

- Ask a grownup for help if needed. Cut out all solid lines (do not cut dotted lines). Small sharp scissors or a craft knife work well to cut out the long slit shapes.
- Fold the square of dotted lines so the printed side is inside.
- Flip over and decorate the other side of the box, with coloring, markers, painting, sticking on jewels or covering in mosaics.



Step 2

- Punch two holes where the dots are printed.
- Bring together the two sides with the holes, and pinch them between thumb and finger. Bring one of the sides with the slit up over the two ends you are holding and push the two ends through the slot. Now bring the other side up and over, and push the two ends through the slot in that side.



Step 3

- Put a string through the punched holes to hang the finished box from the tree.



All done!

